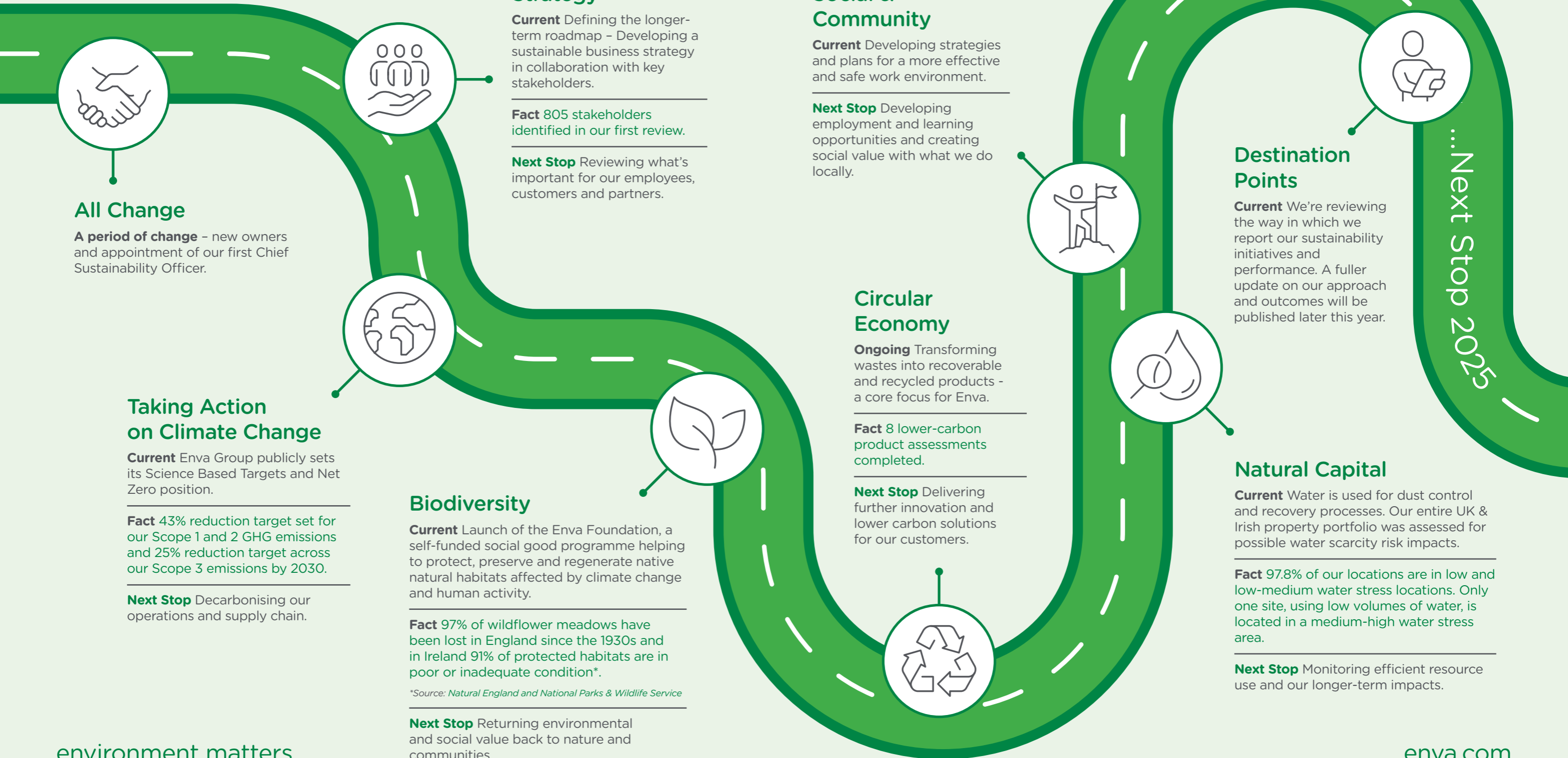


# Sustainability

Enva's Direction for 2024...



## All Change

**A period of change** – new owners and appointment of our first Chief Sustainability Officer.

## Taking Action on Climate Change

**Current** Enva Group publicly sets its Science Based Targets and Net Zero position.

**Fact** 43% reduction target set for our Scope 1 and 2 GHG emissions and 25% reduction target across our Scope 3 emissions by 2030.

**Next Stop** Decarbonising our operations and supply chain.

## Strategy

**Current** Defining the longer-term roadmap – Developing a sustainable business strategy in collaboration with key stakeholders.

**Fact** 805 stakeholders identified in our first review.

**Next Stop** Reviewing what's important for our employees, customers and partners.

## Biodiversity

**Current** Launch of the Enva Foundation, a self-funded social good programme helping to protect, preserve and regenerate native natural habitats affected by climate change and human activity.

**Fact** 97% of wildflower meadows have been lost in England since the 1930s and in Ireland 91% of protected habitats are in poor or inadequate condition\*.

\*Source: Natural England and National Parks & Wildlife Service

**Next Stop** Returning environmental and social value back to nature and communities.

## Governance & Standards

**Current** Developed policies and procedures to better control risks and compliance outcomes.

**Next Stop** Building out our standards, setting expectations and working more closely with our suppliers.

## Social & Community

**Current** Developing strategies and plans for a more effective and safe work environment.

**Next Stop** Developing employment and learning opportunities and creating social value with what we do locally.

## Circular Economy

**Ongoing** Transforming wastes into recoverable and recycled products - a core focus for Enva.

**Fact** 8 lower-carbon product assessments completed.

**Next Stop** Delivering further innovation and lower carbon solutions for our customers.

## Destination Points

**Current** We're reviewing the way in which we report our sustainability initiatives and performance. A fuller update on our approach and outcomes will be published later this year.

## Natural Capital

**Current** Water is used for dust control and recovery processes. Our entire UK & Irish property portfolio was assessed for possible water scarcity risk impacts.

**Fact** 97.8% of our locations are in low and low-medium water stress locations. Only one site, using low volumes of water, is located in a medium-high water stress area.

**Next Stop** Monitoring efficient resource use and our longer-term impacts.