


environment matters

Interceptors & Forecourt services

Avoid environmental incidents, drain blockages and chamber overflows with regular interceptor maintenance and forecourt cleaning.

A large red circle with a white border is located on the right side of the page. Inside the circle, the text "CALL 01623 871 964 TODAY" is written in white, uppercase, sans-serif font. The background of the page is a dark green gradient that curves from the top left towards the bottom right.

CALL
01623 871 964
TODAY

- 
- A photograph of a worker in an orange high-visibility jacket and dark trousers is standing on a concrete surface next to a large, rectangular drainage chamber. The worker is holding a blue hose. The chamber is open, revealing a dark interior. The ground is wet and there are some pipes and equipment around the site.
- ✓ Interceptor servicing
 - ✓ ACO & Gully cleaning
 - ✓ Bund cleaning
 - ✓ Drainage cleaning
 - ✓ Forecourt services
 - ✓ Grease trap cleaning
 - ✓ Septic tank cleaning
 - ✓ Fuel tank cleaning

At Enva we can provide a regular service to your interceptors, removing the accumulated silt and oil.

All liquid emanating from vehicle wash bays, garage forecourts and other areas where oil or chemical products may spill has to run through an interceptor to ensure that no contaminants enter the surface water drainage system. In the absence of an interceptor, liquid can be stored in a holding tank.



Oil and petrol interceptors trap and filter dangerous hydrocarbon pollutants from water run-off. They are commonly used at car parks, petrol stations, roadworks, construction sites and other places where vehicles gather. Flooding, or interceptor blockages can lead to pollution and environmental damage if the pollutants find their way into the local water course.

Companies may also be fined or face legal action. Regular interceptor maintenance and cleaning can mitigate the risks of environmental incidents.

Interceptor maintenance

Environmental incidents, drain blockages and chamber overflows can be easily avoided with regular interceptor cleaning and maintenance.

To avoid the build-up of grit and dirt, interceptors must be cleaned and emptied regularly. Our experts plan appropriate interceptor cleaning solutions, ensuring that tanks are drained and managed responsibly.

It is generally advised that you have your interceptor cleaned and maintained by accredited professionals, at least every three to six months. Additional cleaning and maintenance may also be required after any major rainstorms or events that may have caused additional debris to collect in the system.

- ✓ Ensure you have a regular cleaning and maintenance schedule in place
- ✓ Keep logs of any inspections, maintenance, incidents, services and contaminant removal activities
- ✓ Ensure any contaminants are removed and transported in accordance with relevant legislation.



Contact our team on T. 01623 871 964 or email interceptors@enva.com

We can empty holding tanks, and provide a fully automated service, attending on predefined intervals.



Forecourt services

Maintaining safe, clean and efficient forecourts, and ensure compliance with petroleum licence renewals and local authority inspections is essential. Our forecourt maintenance services include:

- ✓ Jetting of all surface gullies, channels and aco-drains
- ✓ Cleaning fill points and tank chambers
- ✓ Jetting down car wash slabs and removing waste
- ✓ Bund cleaning
- ✓ Grease trap cleaning.

Having your forecourt cleansed as part of a regular maintenance schedule will not only improve its appearance but reduces the risk of overflows, blockages and spills.



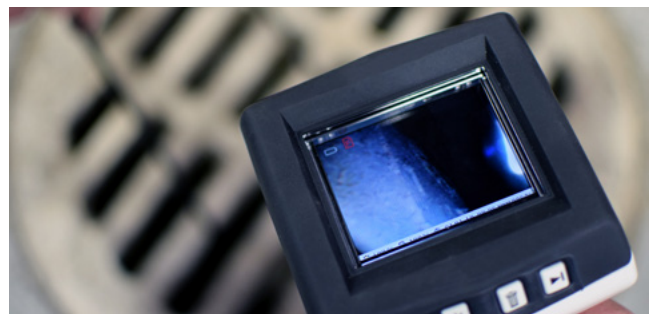
Drainage Services

Ensuring drainage systems work effectively is key to minimising downtime and protecting against health and other environmental issues. Our expertise and state-of-the-art equipment support efficient, compliant drainage networks and guards against potential health and environmental hazards, meaning fully operational and compliant drainage networks.

Key services:

- ✓ Drain jetting and cleaning
- ✓ 24/7 drainage emergency
- ✓ CCTV survey
- ✓ Sewers, culverts and tunnels
- ✓ Sewer, draining and pipework relining
- ✓ Septic tanks
- ✓ Jet vac & vacuum tankers
- ✓ Rehabilitation works, flow & load surveys, impermeable area surveys and topographical surveys.

Enva's specialised equipment and vehicles transport the waste directly to our licensed facilities and we provide Certificates of Treatment/Disposal. We provide a full, traceable and compliant service to our customers providing all paperwork for regulatory and audit requirements. Our network of 33 facilities and teams of skilled professionals operate safely and compliantly throughout the UK and ROI.





Our business



34 facilities



1600 employees



£294m turnover

For further information please contact
interceptors@enva.com

enva.com